



# District Fall Reopening Planning July 8, 2020

Presented by Superintendent Shelly Viramontez, Ed.D.

# Agenda

---

- ▶ Quick Overview of Requirements
  - ▶ Review Legislation for Distance Learning
  - ▶ Break Out Sessions to review potential plans
  - ▶ Share out of pros/cons of various plans
  - ▶ Determine whether there are plans to put forward or if more information is needed prior to 7.23.20 Board Recommendation
-

# Outcomes

---



- ▶ Understand latest guidelines
  - ▶ Understand new legislation
  - ▶ Gain clarification of information
  - ▶ Determine schedule proposal for elementary and middle schools
-

# Reduce Risk of Disease Transmission

---

- ▶ Minimize number of people who come in contact with each other
- ▶ Maximize physical distance between people
- ▶ Reduce the time people spend in close proximity to each other
- ▶ Minimize dispersion of droplets and aerosols  
(e.g. use face coverings and cover coughs & sneezes)



# Current Studies Suggest

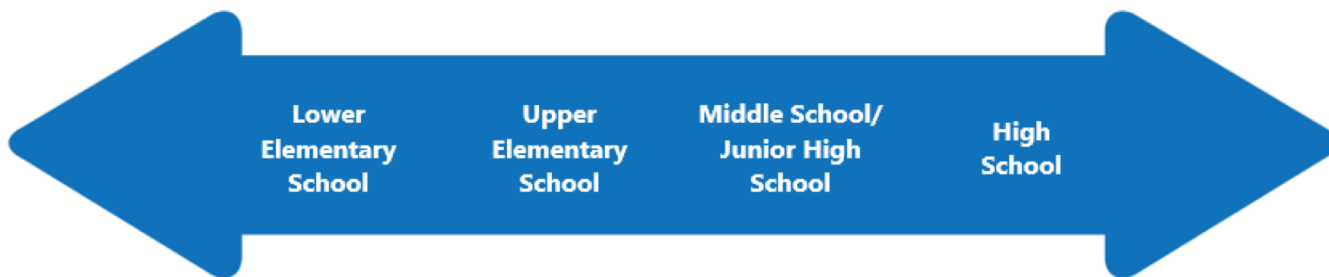
---

- ▶ COVID-19 disease prevalence among children is lower than in adults, and children who contract COVID-19 are more likely than adults to be asymptomatic or to have very mild symptoms.
  - ▶ Multisystem inflammatory syndrome in children, a severe condition associated with COVID-19, remains rare.
  - ▶ In several studies, children were less likely to be the first case within a household, suggesting that child-to-adult transmission may be less common than adult-to-child transmission.
  - ▶ In other countries, where schools remained open or have recently reopened, cases in schoolchildren have been associated with few secondary cases in the school, suggesting that child-to-child transmission may also not be as significant as with influenza.
  - ▶ Analysis of data broken down further by age show that these trends are seen more in younger children compared to teenagers, whose disease patterns more closely parallel those of adults.
-

# Preventing COVID-19 Transmission by Age Group

**Organizing Principle:  
Stable Cohorts**

**Organizing Principle:  
Physical Distancing and  
Face Coverings**



Less feasible to limit close contact and wear face coverings

More feasible to maintain stable cohorts

Greater need for in-person and group-based instruction with close contact to support social-emotional and academic development

More feasible to limit close contact and wear face coverings

Less feasible to maintain stable cohorts

Lesser need for in-person or group-based instruction with close contact to support social-emotional and academic development

# General Requirements

---

- ▶ Communicate with all staff and families regarding physical distancing requirements and recommendations.
  - ▶ Train staff and students on protocols for physical distancing for both indoor and outdoor spaces.
  - ▶ Post signage reminding students and staff about physical distancing in prominent locations throughout each school campus.
  - ▶ Allow only necessary visitors and volunteers on the campus and limit the number of students and staff who come into contact with them.
  - ▶ For outside organizations utilizing school facilities outside of school hours, ensure that they follow all required health and safety measures.
- 



# Arrival & Departure Requirements

---

- ▶ Minimize close contact between students, staff, families, and the broader community at arrival and departure through the following methods:
  - ▶ Designate routes for entry and exit, using as many entrances and exits as can be supervised appropriately to decrease crowding at entry and exit points.
  - ▶ Instruct drivers to remain in their vehicles, to the extent possible, when dropping off or picking up students. When in-person drop-off or pick-up is needed, only a single parent or caregiver should enter the facility to pick up or drop off the child.
  - ▶ Require adults entering campus for in-person pick-up or drop-off to wear a face covering.
  - ▶ Provide supervision to disperse student gatherings during school arrival and departure.
-



# Classroom Setting Requirements

---

## ▶ Elementary Schools

- ▶ Ensure students and staff remain in stable classroom cohorts with the same staff and students together for the entire day. Students should not mix with other stable classroom cohorts

## ▶ Middle Schools

- ▶ Assuming stable cohorts are not possible – reduce risk by maximizing the space between students' desks

## ▶ All Schools

- ▶ Distance teacher and staff desks at least 6' from students to minimize adult to child disease transmission
  - ▶ Assign stable seating arrangements to ensure that contacts within a classroom are minimized and easily identifiable
- 



# Transportation to and from school

---

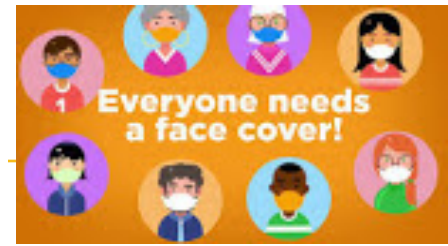
- ▶ At least 6' between the bus driver and students seated
  - ▶ Visual cues
- ▶ Driver and students wear face coverings at all times on the bus
- ▶ Maximize distance between Ss by limiting seats to the extent practicable
- ▶ Students from same family or classroom should sit together when possible
- ▶ Buses thoroughly cleaned and disinfected daily



# Facial Covering

---

- ▶ All adults and middle schoolers must wear while on campus, except when eating or drinking
  - ▶ Staff excluded – require respiratory protection per CAL/OSHA standards
  - ▶ Students excluded for breathing problems, special needs who are unable to tolerate
  - ▶ All must wear:
    - ▶ When arriving/departing school
    - ▶ Outside of classroom – except when eating, drinking, exercising
    - ▶ Riding on a bus
- 



# Handwashing & Hygiene

---

- ▶ Model, practice & monitor handwashing – esp. for younger
  - ▶ Develop routines for handwashing, using hand sanitizer
    - ▶ Upon arrival, after restroom, after playing outside, before & after eating, after coughing or sneezing
  - ▶ Stagger wash time to reduce congestion
  - ▶ Provide hand sanitizer in each indoor space used by staff & students
  - ▶ Suspend use of shared items, such as drinking fountains
-

# Cleaning & Maintenance

---

- ▶ At least daily, clean and disinfect frequently touched hard surfaces, bathroom surfaces, playground equipment and shared objects
- ▶ Keep doors open if practicable to reduce need to frequently touch door knob
- ▶ Pursuant to CDC guidelines



# Electives and Extra Curricular Activities

---

- ▶ Do not allow if social distancing cannot be practiced
- ▶ Do not allow aerosol generating activities, including in person choir, band, cheers or chants



# School Events

---



## ▶ Elementary schools:

- ▶ Field trips, assemblies and other gatherings are permitted if
  1. Students of different classroom cohorts do not mix and
  2. Classroom cohorts remain at least 25' apart from each other

## ▶ Middle schools:

- ▶ Field trips, assemblies and other gatherings will be permitted to the extent allowed under any applicable requirements for gatherings occurring within the community

## ▶ All Schools

- ▶ Attendance should be limited to students and staff or to those participating in a presentation only (no visitors)
-

# Health Screening

---

- ▶ Post signs at all entrances instructing students, staff, and visitors not to enter campus if they have any COVID-19 symptoms. COVID-19 symptoms include fever, chills, cough, shortness of breath, difficulty breathing, fatigue, muscle or body aches, headache, recent loss of taste or smell, sore throat, congestion or runny nose, nausea, vomiting, or diarrhea.
  - ▶ All students and staff should be screened for symptoms each day. Staff and students' parents or guardians can conduct symptom screening at-home, prior to arrival. Alternatively, symptom screening can occur on-site via self-reporting, visual inspection, or a symptom screening questionnaire. Symptom screenings do not need to be performed by a nurse or other health professional.
  - ▶ Temperature screening of students and staff is not required. If temperature screening is performed, contact-less thermometers should be used.
  - ▶ Contact thermometers should only be used when a fever is suspected and if appropriate PPE can be used (facemask, eye protection, and disposable gloves). Contact thermometers must be properly cleaned and disinfected after each use.
  - ▶ Students or staff with any identified COVID-19 symptoms and/or a temperature of 100.0 or higher must be sent home immediately until testing and/or medical evaluation has been conducted.
  - ▶ Communicate screening requirements to all staff and families. Provide periodic reminders throughout the school year.
-



# COVID 19 Testing and Reporting

---

- ▶ Require students and staff to get tested as soon as possible after they develop one or more COVID-19 symptoms or if one of their household members or non-household close contacts tested positive for COVID-19.
  - ▶ Positive test results:
    - ▶ Require that parents/guardians and staff notify school administration immediately if the student or staff tested positive for COVID-19 or if one of their household members or non-household close contacts tested positive for COVID-19.
  - ▶ Negative test results:
    - ▶ Symptomatic students or staff who test negative for COVID-19 should remain home until at least 72 hours after resolution of fever (if any) and improvement in other symptoms.
    - ▶ Asymptomatic non-household close contacts to a COVID-19 case should remain at home for a total of 14 days from date of last exposure even if they test negative.
    - ▶ Asymptomatic household contacts should remain at home until 14 days after the COVID-19 positive household member completes their isolation.
    - ▶ Documentation of negative test results must be provided to school administration.
-

# Suspected COVID 19 Cases

---

- ▶ Work with school administrators, nurses, and other healthcare providers to identify an isolation room or area to separate anyone who exhibits COVID-19 symptoms.
  - ▶ Any students or staff exhibiting symptoms will immediately be required to wear a face covering and wait in an isolation area until they can be transported home or to a healthcare facility, as soon as practicable. For serious illness, call 9-1-1 without delay.
-

# Confirmed COVID 19 Cases

---

- ▶ School administrators should notify the County of Santa Clara Public Health Department immediately of any positive COVID-19 case by emailing [coronavirus@phd.sccgov.org](mailto:coronavirus@phd.sccgov.org) and calling (408) 885-4214. Notify all staff and families in the school community of any positive COVID-19 case while maintaining confidentiality as required by state and federal laws.
  - ▶ Close off areas used by any sick person and do not use before cleaning and disinfection. To reduce risk of exposure, wait 24 hours before you clean and disinfect. If it is not possible to wait 24 hours, wait as long as practicable. Ensure a safe and correct application of disinfectants using personal protective equipment and ventilation as recommended in Section 1.C.
  - ▶ For elementary schools and other settings in which stable classroom cohorts have been maintained: All students and staff should be instructed to get COVID-19 testing and remain quarantined at home for 14 days.
  - ▶ For middle schools in which stable classroom cohorts have NOT been maintained: Utilize class seating rosters and consultation with teachers/staff to identify close contacts to the confirmed COVID-19 case in all classrooms and on-campus activities. A close contact is someone who has been within six feet of the case for a prolonged period of time (at least 10-15 minutes). Close contacts should be instructed to get COVID-19 testing and should remain quarantined at home for 14 days.
  - ▶ For all settings: Provide information regarding close contacts to the County of Santa Clara Public Health Department via secure fax or email.
-

# Someone has symptoms

---

Scenario I	Immediate Actions	Communication
A student or staff member either exhibits COVID 19 symptoms, answers yes to a health screening question or has a temperature above 100.0 degress	Student/staff sent home Student/staff instructed to get a test	No action needed unless positive

---

# Someone else is positive for COVID 19

---

Scenario 2	Immediate Actions	Communication
<p>A family member or someone in close contact with a student or staff member (outside school community) tests positive for COVID 19</p>	<p>Student/staff sent home Student/staff instructed to get a test Student/staff instructed to self-quarantine for a full 14 days after date of last exposure to contact or positive COVID 19 household member completes their isolation</p>	<p>For the involved Student family of staff member: Template letter for <i>household member of close contact with COVID 19 case</i></p>

---

# Student or staff tests positive for COVID 19

Scenario 3	Immediate Actions	Communication
<p>A student or staff member tests positive for COVID 19</p>	<p>Student/staff sent home if not already quarantined Student/staff instructed to isolate for 14 days after symptom onset OR 7 days after resolution of symptoms, whichever is longer School-based close contacts identified and instructed to test &amp; quarantine 14 days</p> <ul style="list-style-type: none"><li>• Entire cohort in elementary</li><li>• Seating chart proximity in middle</li><li>• School admin notified</li><li>• PHD notified</li></ul>	<p>For Positive Case Student Family/Staff Template Letter: <i>COVID 19 case</i></p> <p>For staff &amp; students identified as close contacts: Template Letter: <i>Household Member or Close Contact with COVID 19 case</i></p> <p>For all others: Template <i>COVID 19 Case in our Community</i></p>

# Negative Test Results

Scenario	Immediate Actions	Communication
Student or staff tests negative after symptoms	May return to school 72 hours after resolution of fever and improvement in other symptoms	Student/staff bring evidence of negative COVID 19 test or medical note if testing not performed
Student/staff member tests negative after close contact	Must remain in quarantine for full 14 days after exposure to close contact/household member	No action needed
Student or staff tests negative after routine surveillance testing	Can return to school/work immediately	No action needed

# Additional Considerations

---

- ▶ SB 98 adds Education Code sections 43500 through 43504, containing detailed requirements applicable to distance education for the 2020-2021 school year
  - ▶ LEA's shall offer in-person instruction to the greatest extent possible
  - ▶ Distance Learning can be offered
    - ▶ Schoolwide as the result of an order or guidance from PHD
    - ▶ Pupil specific needs
-



# Distance Learning Should be Available for

---

- ▶ Students who are medically fragile or would be put at risk by in-person instruction
- ▶ Students who are isolating or quarantining because of exposure to COVID-19
- ▶ Students who live in a household with anybody who is medically fragile

*Physician's note not required per 7.7.20 guidance*



# Additional Information in New Legislation

---

- ▶ Waives instructional minutes and PE minutes for 2020-21
- ▶ Must provide 180 days of instruction
  - ▶ A day in which all pupils are scheduled for the length of the day under the immediate supervision of a certificated employee or in DL, meets all of the requirements in the legislation
- ▶ Minimum instructional minutes per school day
  - ▶ 180 for kindergarten
  - ▶ 230 for 1<sup>st</sup> – 3<sup>rd</sup>
  - ▶ 240 for 4<sup>th</sup> +



# To Provide Distance Learning

---

- ▶ Confirm or provide access to connectivity & devices to all Ss
  - ▶ Content of same quality as in person instruction – aligned to standards
  - ▶ Academic supports for specific pupil groups
  - ▶ SpED services with accommodations
  - ▶ Designated & integrated ELD instruction
  - ▶ Daily live interaction with teachers and peers for purposes of instruction
  - ▶ Progress monitoring
  - ▶ Maintain school connectedness
  - ▶ Meals for all FRPM eligible
-

# Requirements for Reporting Attendance

---

- ▶ Weekly engagement record documenting synchronous or asynchronous instruction
  - ▶ Evidence of participation in online activities
  - ▶ Completion of assignments
  - ▶ Contact with student or parents
- 
- ▶ *Failure to meet daily participation rates will result in being marked absent and a reduction in ADA*
-

# New Legislative Requirements (cont.)

---

- ▶ Written procedures for tiered reengagement strategies for those absent from DL for more than 3 days or 60% of instructional days in a week
- ▶ Regular communication with parents regarding academic progress



*Penalties for failing to meet 180 days requirement, daily participation rate requirement, providing a weekly engagement record and absences*

---

# Learning Continuity & Attendance Plan

---

- ▶ Must adopt plan by 9/30/20
    1. How district will provide continuity of learning and address the impact of COVID 19 on Ss, staff and the community
    2. Actions district will take to provide in person instruction whenever possible – particularly for those at risk of learning loss
    3. How the district will provide a full curriculum of substantially similar quality if there is transition to DL
-